



### “On Shore Exhibit” Whale Catcher—Toshi Maru No.16

In the year 1958, a large-scale Whale Catcher under Taiyo Fisheries Co., Ltd. was built. The boat had continued service until the end of March on 1988, and from 1989 onwards, the boat was preserved on the shores of the whaling capital of Ayukawa. The year 2011 March 11 was the 2011 Tohoku Earthquake which caused tsunamis higher than 8.6m to wreck havoc onto buildings at the coastal area but the Whale Catcher valiantly endured amidst the calamity, and thus became a symbol of progressing restoration that has come to support the hearts of the people.

Toshi Maru No. 16, Viewing hours | Apr–Oct 9:00–16:00 /  
Nov–Mar 9:00–15:00

Welcome to Oshika Whale Land!  
Let's celebrate with commemorative stamp!

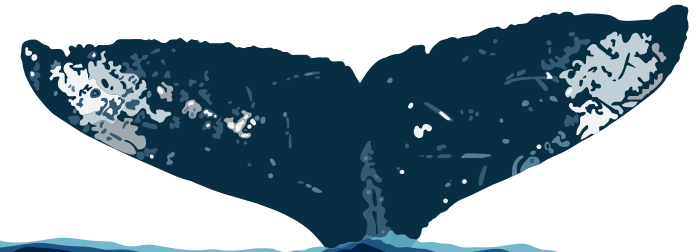
### Visitor Information

Exhibit Hours 9:00–16:00

Closed Wed (If Wed is a holiday, closed the following weekday)

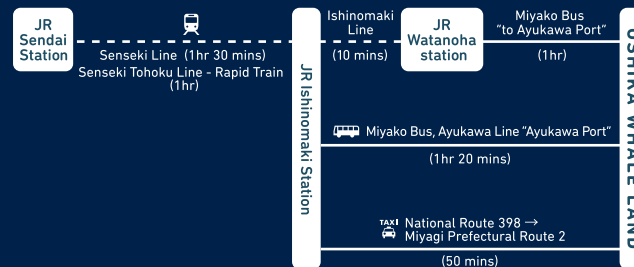
Entrance fee Adult 400 yen (360 yen),  
College/Highschool Student 300 yen (270 yen),  
Junior High/Elementary School 200 yen (180 yen)  
[Children below student age are free]  
\*The prices in () refers to the fee per person for groups (20+ people)

Other facilities Wheelchair Washrooms, Diaper rooms,  
Ostomate Toilet, Wheelchair Rental

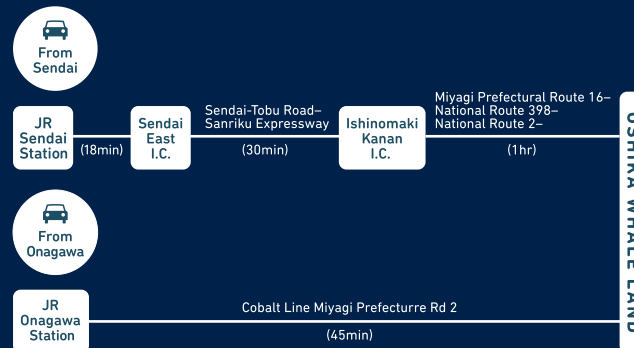


### Access Information

#### Commuting via Public Transportation



#### via Car



## おしかホエールランド OSHIKA WHALE LAND

In this museum, explore the biology and characteristics of whales, while also delving into the rich whaling heritage of the Oshika Peninsula.

### おしかホエールランド

OSHIKA WHALE LAND

TEL:0225-25-6422 FAX:0225-25-6432

MAIL:info@oshika.miyagi.jp

Ayukawahama Minami, Ishinomaki City,  
Miyagi Prefecture 986-2523

Social media  
account



oshika.miyagi.jp

English

## 海とクジラ The Sea and Whales

What kind of creatures are Whales?  
Learn their characteristics and  
become a Whale Expert!

### 1. Discover Whales

There are 90 species of whales on Earth  
laid out on this spectacular wall painting.

How many do you know?

### 2. Learn about whales

Learn about the whales' abilities mainly  
through picture descriptions, supplemented  
by genuine artifacts and specimens.

Do whales sing? Find out at the  
"The Whale Body Q&A" section!

### 3. Swim with whales

Experience the dynamic way whales swim  
in the ocean through an expansive video display.

Almost like you're swimming with them!

## 鯨と牡鹿 Whales and Oshika

Let's learn about the history  
and whale culture of Oshika  
Town and how it has lived  
with Whales.

### 4. Listen to the culture of Oshika

Listen to video exhibits that  
concisely explain the whale  
culture of Oshika and Japan  
in this section.

### 5. See Oshika

Enjoy the scenery of Oshika,  
the town of whales, from  
historical photographs in  
this section.

### 6. The History of Oshika

Behold the massive timeline that  
narrates the history of how a small  
fishing village at Ayukawahama located  
at the Oshika Peninsula became  
Japan's leading capital of whaling.

### 7. Preserve Oshika

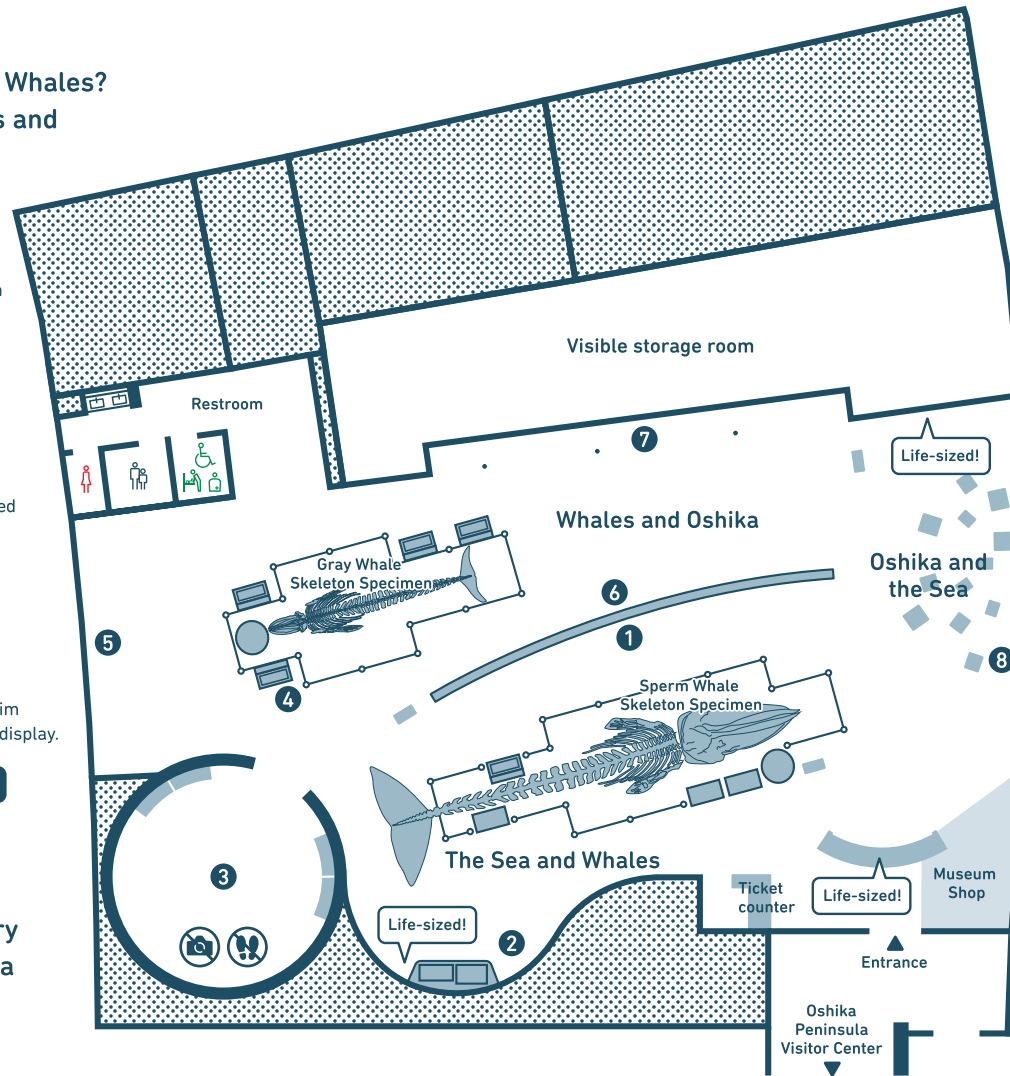
Precious artifacts of Whale culture  
that survived the 2011 Earthquake  
which can only be found in Oshika are  
gathered in this section.

## 牡鹿と海 Oshika and the Sea

Oshika is more than just whales!  
Let's discover the true beauty  
of Oshika's sea!

### 8. The Enchanting Sea of Oshika

Check out art that illustrates  
the blessings of Oshika's sea, and  
a variety of trivia in this



Ayukawahama is located at the edge of the  
Oshika Peninsula.

At the start of the 1900s, this quiet, small fishing  
village rapidly developed into Japan's forerunner  
city in whaling. The town became prosperous  
from whaling and grew lively with the activity of  
city folk, workers, and tourists. Whaling compa-  
nies across Japan would gather in Ayukawa which  
is located near the whale abundant fishing  
grounds of the Sanriku Coast. Those companies  
would then hone their skills together in Ayukawa,  
and it was here where modern whaling in Japan  
began.

Moreover, whales contributed to solving the food  
shortage problem of the Japanese people after  
World War II. Even after the 1982 moratorium on  
commercial whaling, Ayukawa continued to aim for  
feasible and sustainable whaling as the forefront  
in vital scientific research on the natural resource  
management of whales. In 2019, commercial  
whaling resumed. Thus, Ayukawa succeeds to  
preserve the practice of whaling while adapting  
to shifts across changing generations, taking  
the next step into the new era.

The people of Ayukawa have been supported by  
and living with whales. The Oshika Whale Land  
museum preserves valuable resources that  
illustrate the relationship between humans and  
whales, and it connects to the future ahead.

### Sperm Whale Skeleton Specimen

Japan's finest skeleton specimen of the Sperm  
Whale on display

### Gray Whale Skeleton Specimen

Infantile skeleton specimen of the rare breed,  
Gray Whale on display.

Eating and Drinking in the  
Museum is strictly prohibited

No Recording  
in the Theater

No Pets Allowed  
(Guide Dogs/Hearing Dog are OK)

No Footwear  
in the Theater